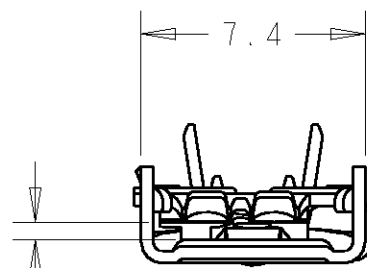
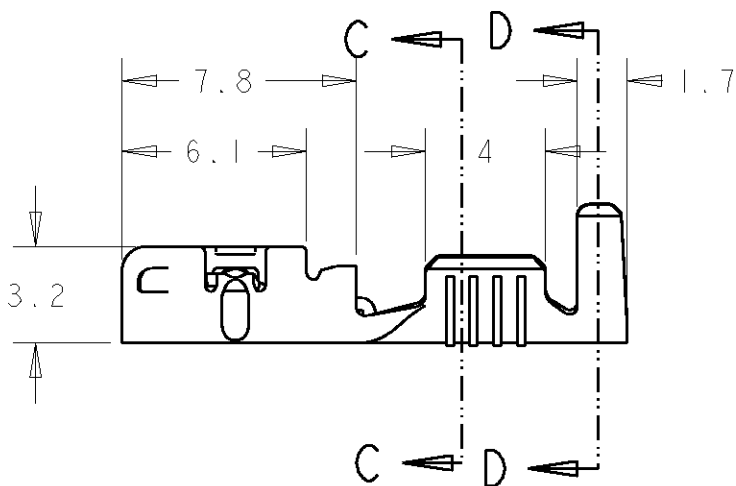
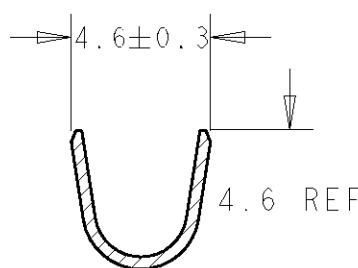
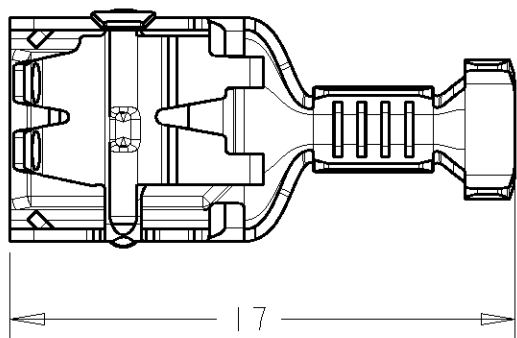


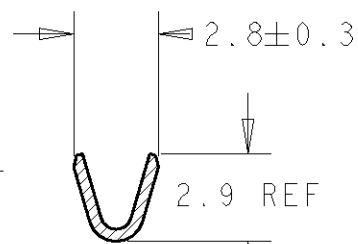
| LOC | DIST | REVISIONS | | | | |
|-----|------|-------------------------|----------|------|------|--|
| P | LTR | DESCRIPTION | DATE | DWN | APVD | |
| AL | 2 | | | | | |
| | F | See ECR 05-017875 | JAN 2006 | J.S. | J.L. | |
| | G | UPDATED TOLERANCE TABLE | FEB 2006 | J.L. | J.L. | |



Para lengüeta de 0.8 mm
For 0.8mm tab thickness

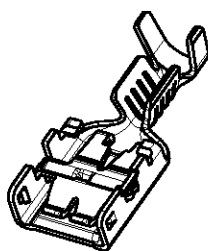


SECTION D-D
SCALE 4:1

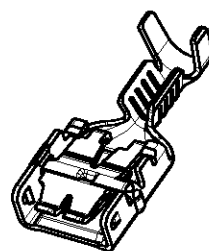


SECTION C-C
SCALE 4:1

Left-sided product



Right-sided product



| | | |
|---------------|----------------|------------------------|
| 336074-3 | Latón Brass | Preestañado Pre-Tin |
| 336074-1 | Latón Brass | - |
| Guion Dash | Material | Acabado Finish |

Rango de hilo de 0,32 a 0,75 mm²
Wire range from 0.32 to 0.75 mm²

Diametro de aislante max 3,0 mm
Max. Insulation Diameter 3.0 mm

| | | | | | | |
|--|------------------|-----------|---|-----------|------------|---------------|
| DIMENSIONS: mm | DWN J. Saló | 22 Dec 04 | MATERIAL | Table | FINISH | Table |
| | CHK J. Lázaro | 22 Dec 04 | Tyco Electronics AMP España, S.A. Barcelona, Spain. | | | |
| TOLERANCES UNLESS OTHERWISE SPECIFIED: | APVD | - | | | | |
| 0 PLC ±0.5 | PRODUCT SPEC | 108-22128 | NAME E-SPRING CONTACT 6,35 Receptaculo 6.35 Receptacle E-SPRING CONTACT | | | |
| 1 PLC ±0.5 | APPLICATION SPEC | 114-22017 | SIZE | CAGE CODE | DRAWING NO | RESTRICTED TO |
| 2 PLC ± | WEIGHT | - | A4 | 00779 | C=336074 | - |
| 3 PLC ± | CUSTOMER DRAWING | | SCALE | 4:1 | SHEET | 1 OF 1 |
| 4 PLC ± | | | | | | REV G |
| ANGLES ± | | | | | | |