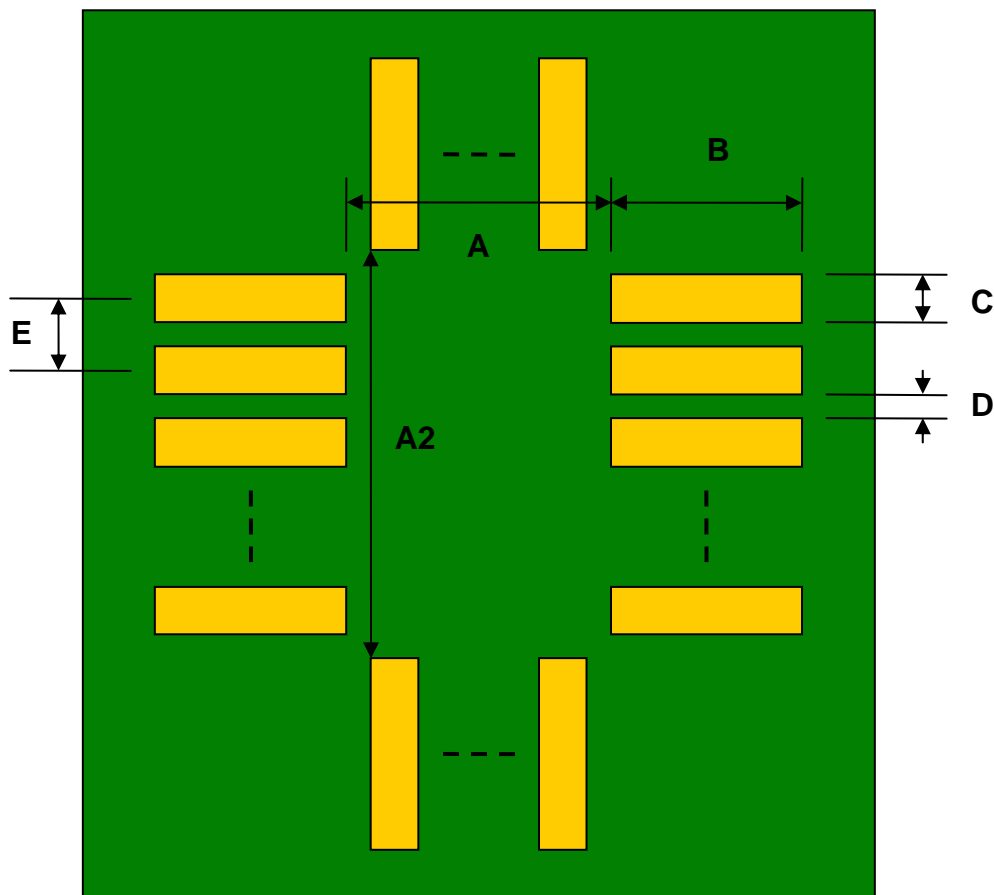


QFN-8 to DIP-8 SMT Adapter (0.8 mm pitch, 1.4 x 1.2 mm body)

REF.	DIMENSIONS					
	mm			inches		
	MIN.	TYP.	MAX.	MIN.	TYP.	MAX.
A		0.60				
A2		0.80				
B		0.50				
C		0.20				
D		0.20				
E		0.40				
F					0.600	
G					0.100	
H					0.025	

Top View (SMT Footprint)



(Representative drawing only - not to scale)

Bottom View (DIP Pins)



(Representative drawing only - not to scale)

Side View (DIP Pins)



(Representative drawing only - not to scale)