

rev	ecn no	dr	date
A	V09-0080	DKH	2009-02-18

A

B

C

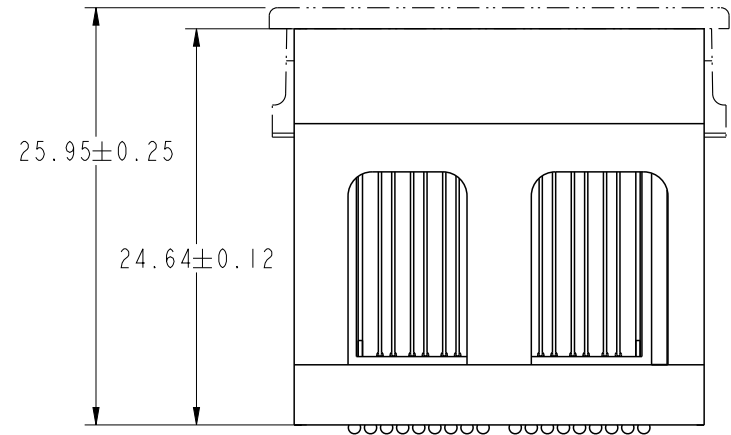
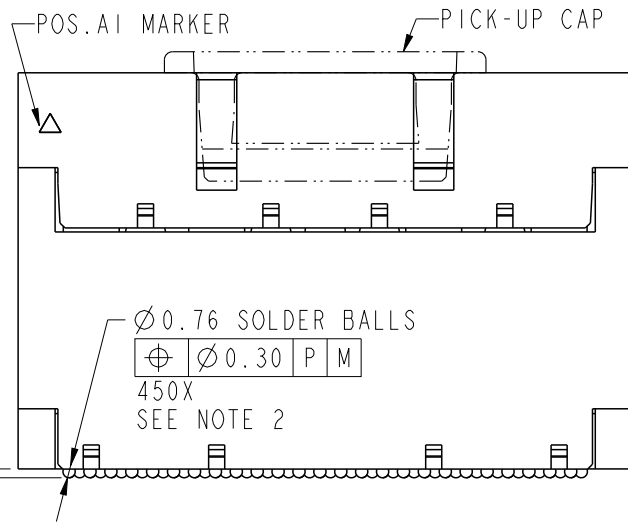
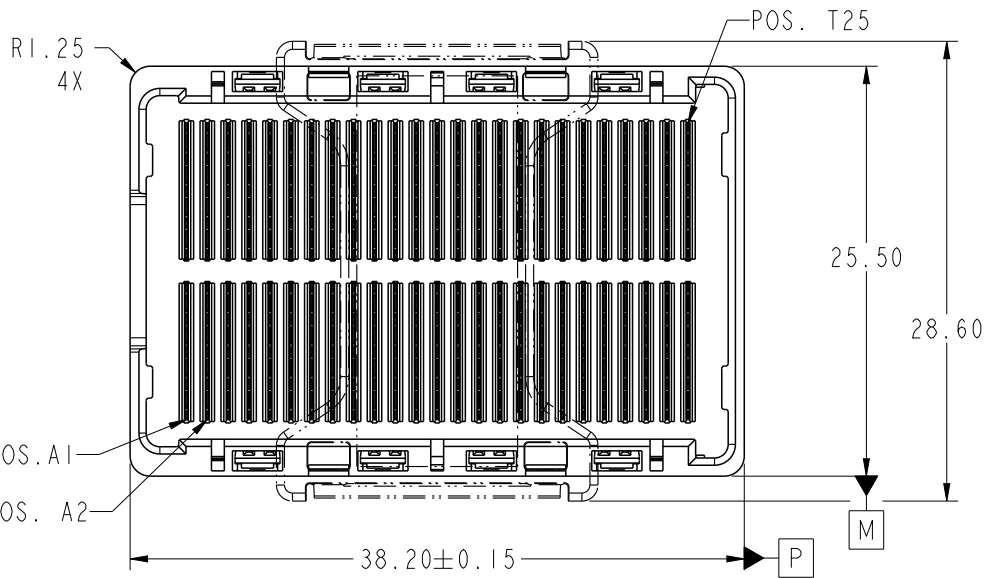
D

A

B

C

D



spec ref	-			dr	Bill Lin	2010/02/02	projection	mm		size	A4	scale	1:1
tolerance std	ASME Y14.5			eng	Nickor Zuo	2011/06/01				ecn no			ELX-DG-003943-1
TOLERANCES UNLESS OTHERWISE SPECIFIED			chr	Alex Cao	2011/06/24	product family				GIG-Array	rel level		Released
surface		linear	0.X	$\pm 0.30$	appr	Pei-Ming Zheng	product family		GIG-Array	rel level		Released	
-		angular	0°	$\pm 2^\circ$			title		GIG-Array		dwg no		10096467
				www.fci.com		cat. no.		Product - Customer Drw			sheet 1 of 5		
						title GIG-Array 25mm PLUG ASSY. 200 SIG. POS.		dwg no 10096467		rev B			

PrdE File - REV C - 2009-06-09

2

3

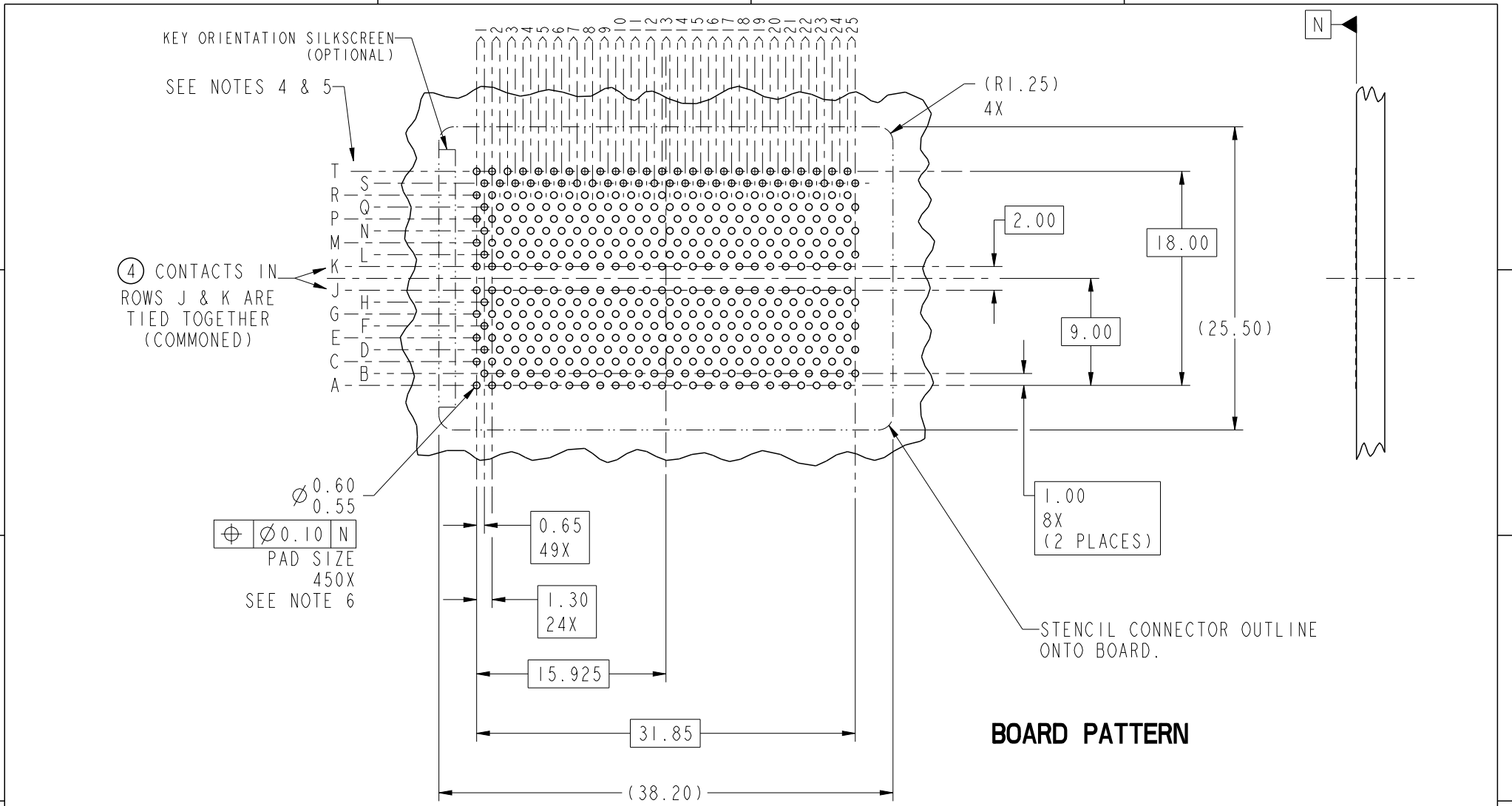
PDS: Rev :B

STATUS:Released

Printed: Jun 27, 2011



Copyright FCI.



**BOARD PATTERN**

spec ref	-	dr	Bill Lin	2010/02/02	projection	mm	size	A4	scale	1:1	
tolerance std	ASME Y14.5	eng	Nickor Zuo	2011/06/01			ecn no		ELX-DG-003943-1		
TOLERANCES UNLESS OTHERWISE SPECIFIED		chr	Alex Cao	2011/06/24			rel level		Released		
surface	linear	appr	Pei-Ming Zheng	2011/06/27			product family		GIG-Array		
	angular	www.fci.com		title		GIG-Array		10096467		rev	B
					25mm PLUG ASSY. 200 SIG. POS.		cat. no.		Product - Customer Drw		sheet 2 of 5

PrdE File - REV C - 2009-06-09

1

2

3

4

A

B

C

D

A

B

C

D

D1  
SIGNAL/GROUND

C1  
GROUND

B1  
SIGNAL/GROUND

A1  
GROUND

A2  
GROUND

A3  
GROUND

B2-B3  
DIFFERENTIAL PAIR  
TYPICAL

### PLUG INTERFACE DESCRIPTION

spec ref		-		dr	Bill Lin	2010/02/02	projection 	mm 	size	A4	scale	1:1			
tolerance std	ASME Y14.5	TOLERANCES UNLESS OTHERWISE SPECIFIED				eng			Nickor Zuo	2011/06/01	ecn no	ELX-DG-003943-1			
						chr			Alex Cao	2011/06/24		product family	GIG-Array		rel level
surface	✓	linear	0.X	±0.30		title	GIG-Array	dwg no	10096467	rev	B				
			0.XX	±0.10								www.fci.com	cat. no.	Product - Customer Drw	sheet 3 of 5
			0.XXX	±0.05											
		angular	0°	±2°											

PrdE File - REV C - 2009-06-09

2

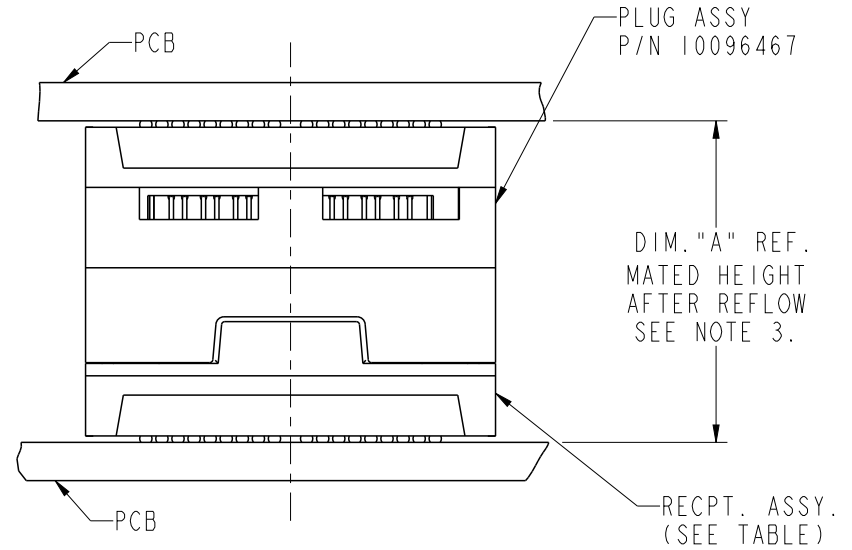
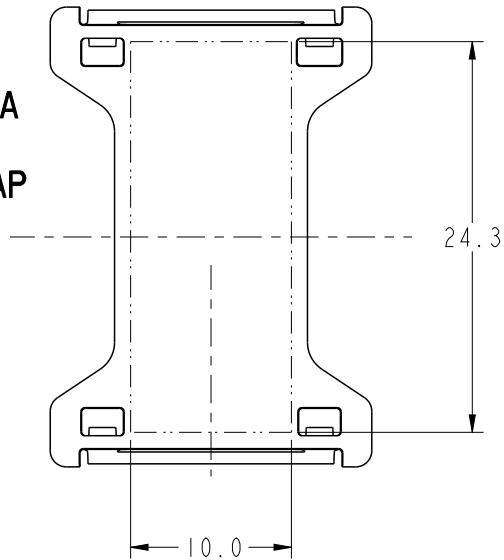
3

4



Copyright FCI.

FLAT AREA  
FOR  
PICK-UP CAP



END VIEW OF MATED CONNECTORS

DIM. "A"	RECPT. ASSY. P/N
30	55740
36	10081496
40	10060912



Copyright FCI.

spec ref		-		dr	Bill Lin	2010/02/02	projection 	mm 	size	A4	scale	1:1
tolerance std	ASME Y14.5	TOLERANCES UNLESS OTHERWISE SPECIFIED		eng	Nickor Zuo	2011/06/01			ecn no	ELX-DG-003943-1		
				chr	Alex Cao	2011/06/24				rel level	Released	
surface	✓	linear	0.X	±0.30	FCI 	title	GIG-Array	25mm PLUG ASSY. 200 SIG. POS.	dwg no		10096467	rev
			0.XX	±0.10								
			0.XXX	±0.05								
		angular	0°	±2°	www.fci.com	cat. no.	Product - Customer Drw		sheet 4 of 5			

PRODUCT NUMBER	SOLDER BALL COMPOSITION	CONTACT PLATING PERFORMANCE LEVEL
10096467-001	STANDARD (EUTECTIC)	PERFORMANCE-BASED PLATING, QUALIFIED TO MEET THE REQUIREMENTS OF FCI PRODUCT SPECIFICATION GS-12-192, INCLUDING TELCORDIA CENTRAL OFFICE
10096467-001LF	LEADFREE	

**NOTES:**

- ① MAT'L:  
HOUSING: LCP  
CONTACT: COPPER ALLOY  
PLATING (CONTACT): Au OVER Ni.  
UL RATING: 94 V-0  
SOLDER BALL: (SEE TABLE) EUTECTIC SnPb OR LEADFREE 95.5 Sn/4Ag/0.5Cu
- ② SOLDER BALLS WILL NOT BE PERFECT SPHERICAL SHAPE DUE TO REFLOW ATTACHMENT.
- ③ MATED HEIGHT EFFECTED BY CUSTOMERS' PCB PAD SIZE, PLATING, SOLDER REFLOW PROFILE & SOLDER PASTE.
- ④ CONTACTS IN ROWS A,C,E,G,J,K,M,P,R AND T ARE SINGLE BEAM CONTACTS, TYPICALLY USED AS GROUND PINS. (NOTE: CONTACTS IN ROWS J & K ARE TIED TOGETHER [COMMONED])
- ⑤ CONTACTS IN ROWS B,D,F,H,L,N,Q AND S ARE DUAL BEAM CONTACTS, TYPICALLY USED AS SIGNAL PINS.
- ⑥ SPECIFIED POSITIONAL TOLERANCE DEFINES PAD TO PAD LOCATION WITHIN LAND PATTERN. POSITIONAL TOLERANCE OF LAND PATTERN TO FUDICIAL MARKS OR PCB DATUMS SHALL BE DEFINED BY CUSTOMER. FOR RECOMMENDED PRODUCT APPLICATION AND PCB DESIGN DETAILS, SEE DOC. NO. GS-20-016.
- ⑦ FOR PROPER APPLICATION FOLLOW FCI APPLICATION SPECIFICATION GS-20-033 LEADFREE SOLDER BALLS WILL NOT SOLDER PROPERLY IN A LEADED SOLDER PROCESS DUE TO A HIGHER REFLOW TEMPERATURE, LEADFREE PRODUCT IS THEREFORE NOT BACKWARDS COMPATIBLE WITH LEADED OR SOME SOLDERING APPLICATIONS, REFERENCE FCI APPLICATION SPECIFICATION.
- ⑧ THIS PRODUCT MEETS THE EUROPEAN UNION DIRECTIVES AND OTHER COUNTRY REGULATIONS AS DESCRIBED IN GS-22-008 PRODUCT MEETING THIS DIRECTIVE IS IDENTIFIED IN HTE LOT CODE NUMBER MARKED ON EACH PART BY HAVING AN "X" IN THE SEVENTH CHARACTER POSITION.

spec ref	-			dr	Bill Lin	2010/02/02	projection 	mm 	size	A4	scale	1:1	
tolerance std	TOLERANCES UNLESS OTHERWISE SPECIFIED			eng	Nickor Zuo	2011/06/01			ecn no	ELX-DG-003943-1			
ASME Y14.5	-			chr	Alex Cao	2011/06/24			product family	GIG-Array		rel level	Released
surface	linear	0.X	±0.30	FCI 	title	GIG-Array		dwg no	10096467		rev	B	
-		0.XX	±0.10			25mm PLUG ASSY. 200 SIG. POS.			www.fci.com	cat. no.	Product - Customer Drw		sheet 5 of 5
-	angular	0°	±2°										