

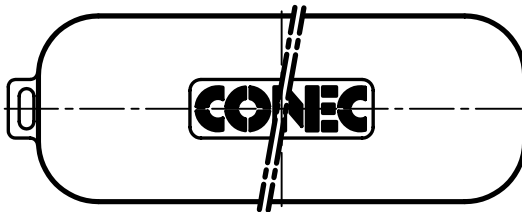
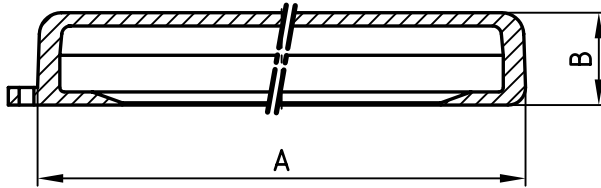
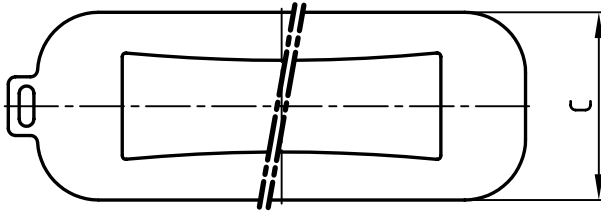
4

3

2

1

used for: D-SUB



Directive 2002/95/EC
"RoHS"
Compliant

| | |
|---|--------|
| APPROVAL # FREIGABE # DEBLOCAGE # AUTORIZACION # APPROVAL | |
| CUSTOMER APPROVAL DATE: | |
| NAME: | TITLE: |
| COMPANY NAME: | |
| APPROVAL # FREIGABE # DEBLOCAGE # AUTORIZACION # APPROVAL | |

| No. of pos. | A | B | C | Part-No. |
|-------------|-------|------|------|------------|
| 9 | 44.56 | 12.6 | 25.6 | 165X17509X |
| 15 | 52.86 | 12.6 | 25.6 | 165X17519X |
| 25 | 66.60 | 12.6 | 25.6 | 165X17529X |
| 37 | 82.66 | 12.6 | 25.6 | 165X17539X |
| 50 | 80.26 | 12.6 | 28.4 | 165X17549X |

THIS DRAWING MAY NOT BE COPIED OR REPRODUCED IN ANY WAY, AND MAY NOT BE PASSED ON TO A THIRD PARTY WITHOUT WRITTEN PERMISSION.
OWNERSHIP AND COPYRIGHT OF CONEC GmbH
DO NOT ALTER CAD DRAWING BY HAND

| | | |
|-----------|-------------|----------------|
| tolerance | | dim. in mm |
| 2006 | date | |
| drawn | 25.07. | name |
| appd. | 25.07. | Kühle |
| norm | | |
| d-old | | |
| a | Origin | |
| rev. | description | date |
| | | name |



| | |
|-----------|--|
| scale: | 1:1 |
| material: | TPE |
| title: | RUBBER BOOT 9-50pos. for water resistant D-SUB hoods |
| dwg no: | AutoCAD 2006 |
| | DIN-A 4 |
| | sh: 1/1 |
| part no: | 16K1A1855 |
| | see table |

4

3

2

1