

THIS DRAWING IS UNPUBLISHED.

RELEASED FOR PUBLICATION

20

© COPYRIGHT 20 BY -

ALL RIGHTS RESERVED.

LOC CE DIST 16

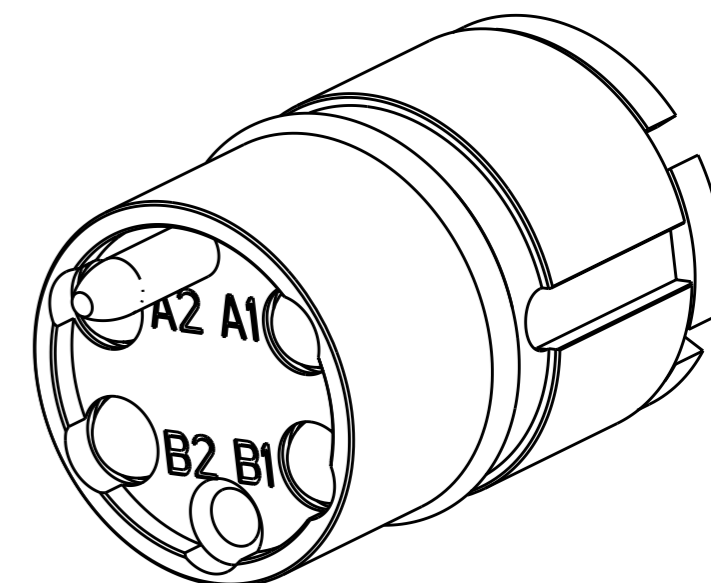
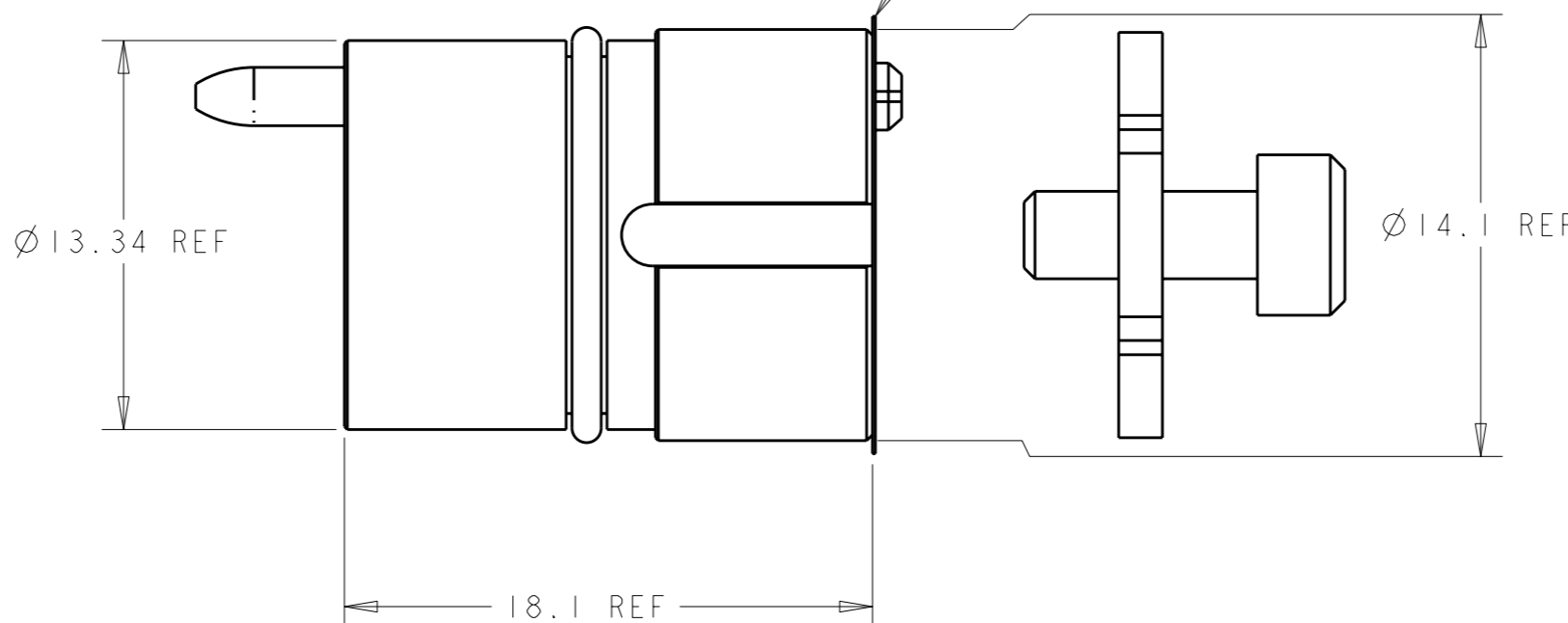
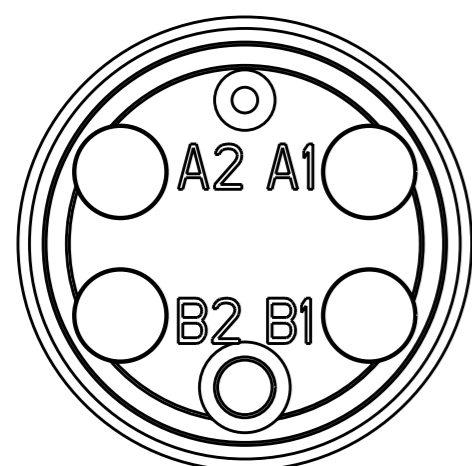
REVISIONS

P	LTR	DESCRIPTION	DATE	DWN	APVD
	F	ECR-09-007414	02JUN2009	KG	DW


1. USE WITH FERRULE ASSEMBLY KIT P/N 1588700-1. QUANTITY OF 4 REQUIRED. FERRULE MUST BE FLAT-POLISHED DURING FIBER TERMINATION FOR BEST PERFORMANCE.

2. PROTECTIVE LABEL APPLIED AFTER FINAL CLEAN ROOM TEST TO PREVENT OPTICAL CAVITY CONTAMINATION. REMOVE ONLY WHEN READY TO ASSEMBLE.

3. THIS PRODUCT HAS NOT COMPLETED VALIDATION TESTING.



4 CHANNEL, 850/1300nm MM	1515747-1
DESCRIPTION	PART NO.

THIS DRAWING IS A CONTROLLED DOCUMENT.		DWN E. HOPKINS 08OCT2002	 TE Connectivity	
DIMENSIONS: mm		CHK D. WERTMAN 08OCT2002		
TOLERANCES UNLESS OTHERWISE SPECIFIED:		APVD D. WERTMAN 08OCT2002	NAME INSERT ASSEMBLY, 4 CHANNEL, 850/1300nm MM PRO BEAM JR.	
0 PLC ±- 1 PLC ±- 2 PLC ±- 3 PLC ±- 4 PLC ±- ANGLES ±-		PRODUCT SPEC -	SIZE A3 CAGE CODE 00779 DRAWING NO C-1515747 RESTRICTED TO -	
MATERIAL STAINLESS ALLOYS & NBR		FINISH N/A	SCALE 4:1 SHEET 1 OF 1 REV F	
		WEIGHT -	CUSTOMER DRAWING	