

3A, 150V Trench Schottky Rectifiers

FEATURES

- Low power loss, high efficiency
- Ideal for automated placement
- High surge current capability
- Compliant to RoHS directive 2011/65/EU and in accordance to WEEE 2002/96/EC
- Halogen-free according to IEC 61249-2-21

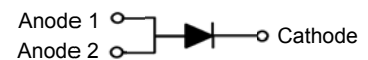
APPLICATIONS

- Switching mode power supply (SMPS)
- Adapters
- Lighting application
- On-board DC/DC converter

MECHANICAL DATA

- Case: TO-277A (SMPC)
- Molding compound: UL flammability classification rating 94V-0
- Moisture sensitivity level: level 1, per J-STD-020
- Packing code with suffix "G" means green compound (halogen-free)
- Matte tin plated leads, solderable per J-STD-002
- Meet JESD 201 class 1A whisker test
- Polarity: Indicated by cathode band
- Weight: 95 mg (approximately)

KEY PARAMETERS		
PARAMETER	VALUE	UNIT
$I_{F(AV)}$	3	A
V_{RRM}	150	V
I_{FSM}	90	A
V_F at $I_F=3A$	0.86	V
T_{JMAX}	150	°C
Package	SMPC	
Configuration	Single dice	



ABSOLUTE MAXIMUM RATINGS ($T_A = 25^\circ\text{C}$ unless otherwise noted)			
PARAMETER	SYMBOL	TSP3H150S	UNIT
Marking code on the device		3H150	
Maximum repetitive peak reverse voltage	V_{RRM}	150	V
Maximum RMS voltage	V_{RMS}	105	V
Maximum DC blocking voltage	V_{DC}	150	V
Maximum average forward rectified current	$I_{F(AV)}$	3	A
Peak forward surge current, 8.3 ms single half sine-wave superimposed on rated load	I_{FSM}	90	A
Non-repetitive peak reverse current ^(Note1)	I_{RSM}	2	A
Voltage rate of change (Rated V_R)	dV/dt	10,000	V/ μs
Operating Junction and Storage Temperature Range	T_J, T_{STG}	- 55 to +150	°C

Notes:

1: Pulse width : 5 us / pulse No. : 10 times

THERMAL PERFORMANCE			
PARAMETER	SYMBOL	LIMIT	UNIT
Junction to Lead Thermal Resistance	$R_{\theta JL}$	16	°C/W
Junction to Ambient Thermal Resistance	$R_{\theta JA}$	58.5	°C/W
Junction to Case Thermal Resistance	$R_{\theta JC}$	21.5	°C/W

Thermal Performance Note: Units mounted on recommended PCB (16mm x 16mm Cu test board)

ELECTRICAL SPECIFICATIONS ($T_A = 25^\circ\text{C}$ unless otherwise noted)						
PARAMETER	CONDITIONS	SYMBOL	MIN	TYP	MAX	UNIT
Maximum instantaneous forward voltage ^(Note 1)	$I_F = 1\text{A}, T_J = 25^\circ\text{C}$	V_F	-	0.65	0.74	V
	$I_F = 3\text{A}, T_J = 25^\circ\text{C}$		-	0.77	0.86	V
	$I_F = 1\text{A}, T_J = 125^\circ\text{C}$		-	0.53	0.62	V
	$I_F = 3\text{A}, T_J = 125^\circ\text{C}$		-	0.62	0.71	V
Maximum reverse current @ rated V_R ^(Note 2)	$T_J = 25^\circ\text{C}$	I_R	-	1	10	μA
	$T_J = 125^\circ\text{C}$		-	1	10	mA
Junction capacitance	1 MHz, $V_R=4.0\text{V}$	C_J	-	150	-	pF
Reverse recovery time	$I_F=0.5\text{A}, I_R=1.0\text{A}$ $I_{RR}=0.25\text{A}$	t_{rr}	-	20	-	ns

Notes:

1. Pulse test with PW=0.3 ms
2. Pulse test with PW=30 ms

ORDERING INFORMATION

PART NO.	PACKING CODE	PACKING CODE SUFFIX	PACKAGE	PACKING
TSP3H150S ^(Note 1)	S1	G	SMPC	1,500 / 7" Plastic reel
	S2			6,000 / 13" Paper reel

Notes:

1. Whole series with green compound

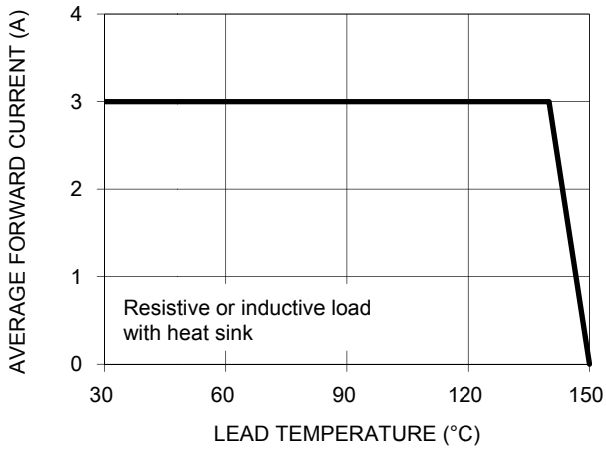
EXAMPLE

EXAMPLE P/N	PART NO.	PACKING CODE	PACKING CODE SUFFIX	DESCRIPTION
TSP3H150S S1G	TSP3H150S	S1	G	Green compound

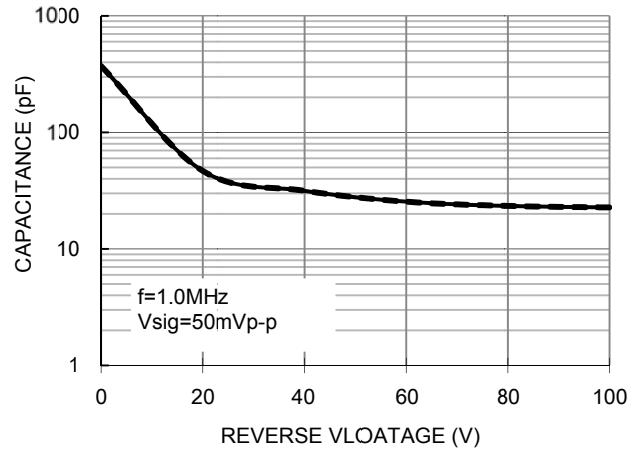
CHARACTERISTICS CURVES

($T_A = 25^\circ\text{C}$ unless otherwise noted)

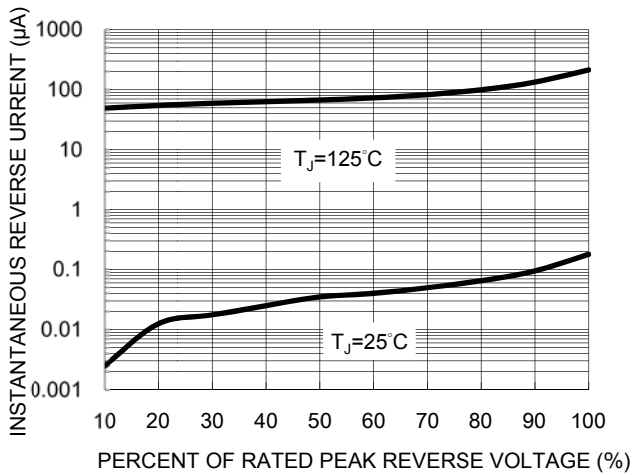
Forward Current Derating Curve



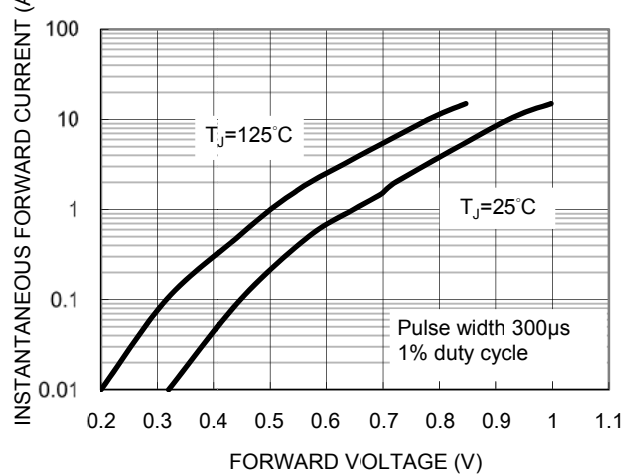
Typical Junction Capacitance



Typical Reverse Characteristics

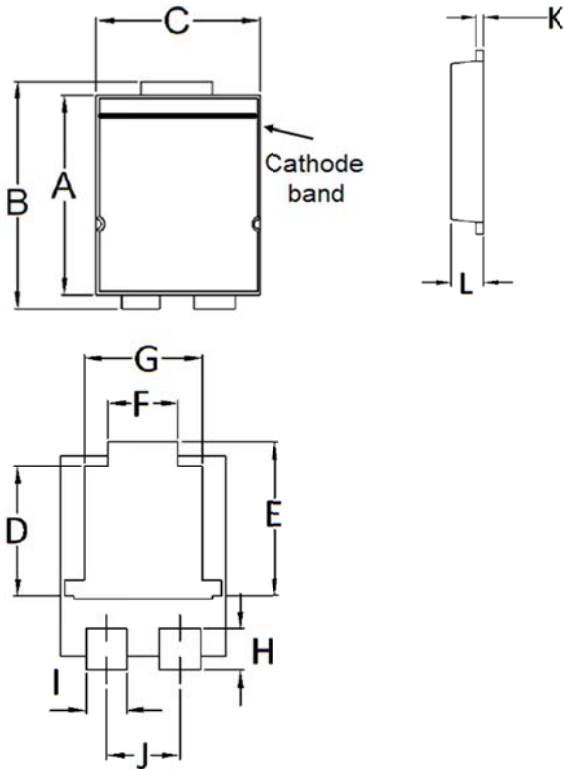


Typical Forward Characteristics



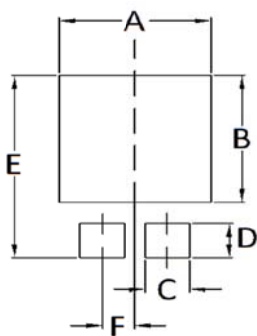
PACKAGE OUTLINE DIMENSIONS (Unit: Millimeters)

SMPC



DIM	Unit (mm)		Unit (inch)	
	Min	Max	Min	Max
A	5.650	5.750	0.222	0.226
B	6.350	6.650	0.250	0.262
C	4.550	4.650	0.179	0.183
D	3.540	3.840	0.139	0.151
E	4.235	4.535	0.167	0.179
F	1.850	2.150	0.073	0.085
G	3.170	3.470	0.125	0.137
H	1.043	1.343	0.041	0.053
I	1.000	1.300	0.039	0.051
J	1.930	2.230	0.076	0.088
K	0.175	0.325	0.007	0.013
L	1.000	1.200	0.039	0.047

SUGGESTED PAD LAYOUT (Unit: Millimeters)



Symbol	Unit (mm)	Unit (inch)
A	4.80	0.189
B	4.72	0.186
C	1.40	0.055
D	1.27	0.050
E	6.80	0.268
F	1.04	0.041

MARKING DIAGRAM



P/N = Specific Device Code
 YW = Date Code
 F = Factory Code

Notice

Specifications of the products displayed herein are subject to change without notice. TSC or anyone on its behalf, assumes no responsibility or liability for any errors or inaccuracies.

Information contained herein is intended to provide a product description only. No license, express or implied, to any intellectual property rights is granted by this document. Except as provided in TSC's terms and conditions of sale for such products, TSC assumes no liability whatsoever, and disclaims any express or implied warranty, relating to sale and/or use of TSC products including liability or warranties relating to fitness for a particular purpose, merchantability, or infringement of any patent, copyright, or other intellectual property right.

The products shown herein are not designed for use in medical, life-saving, or life-sustaining applications. Customers using or selling these products for use in such applications do so at their own risk and agree to fully indemnify TSC for any damages resulting from such improper use or sale.