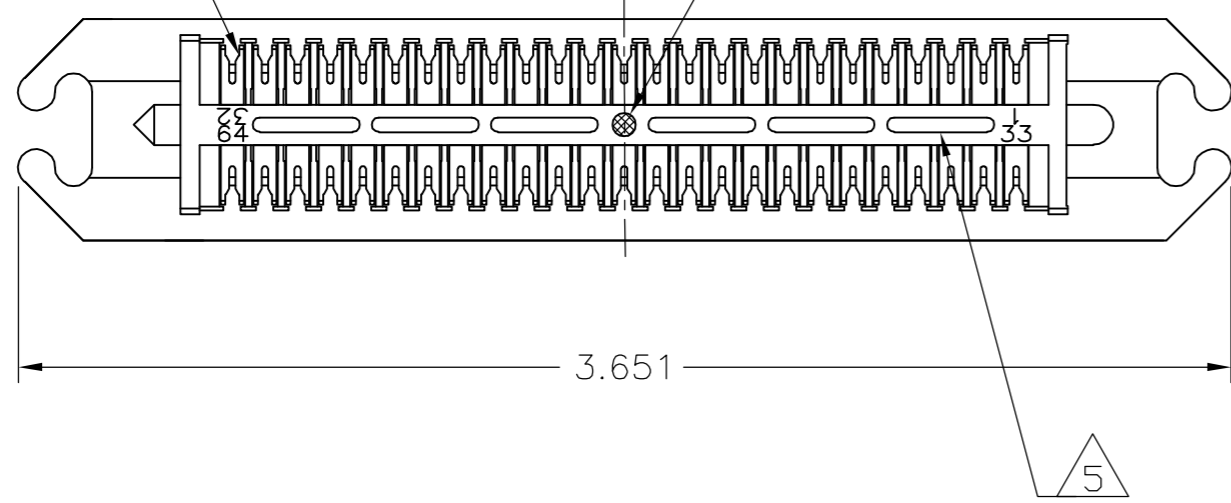


THIS DRAWING IS UNPUBLISHED. RELEASED FOR PUBLICATION  
 © COPYRIGHT BY TYCO ELECTRONICS CORPORATION. ALL RIGHTS RESERVED.

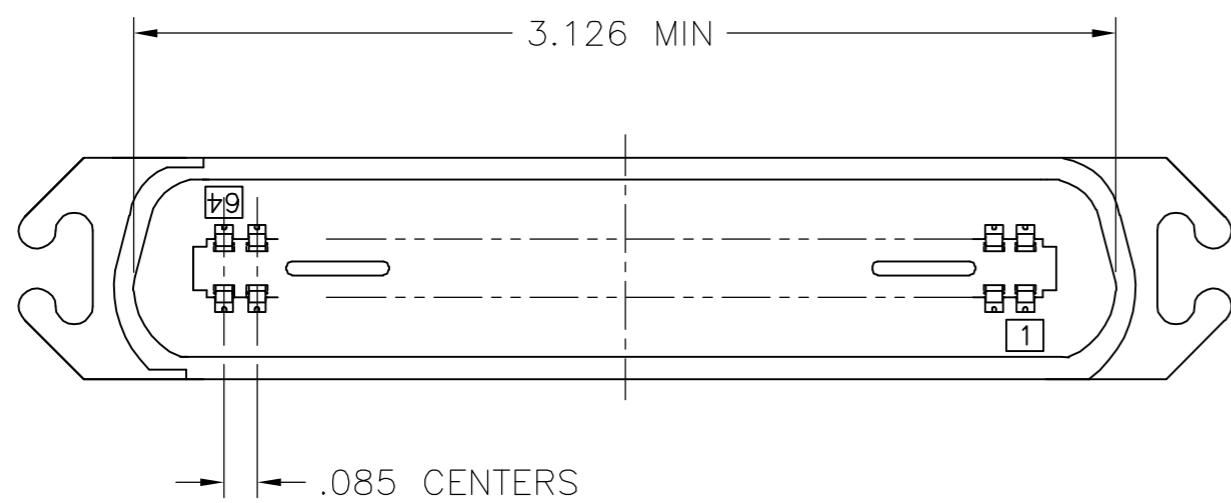
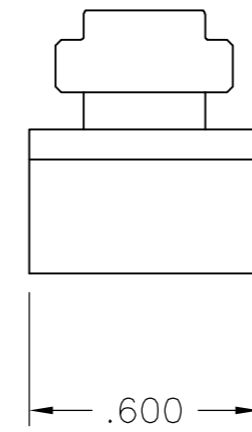
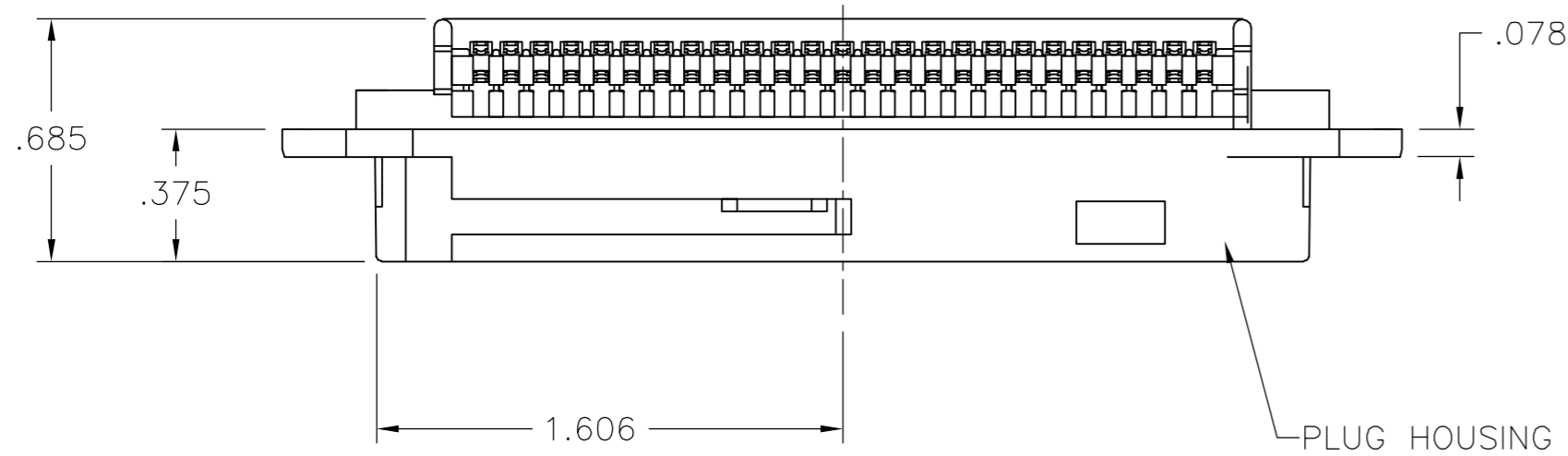
LOC		DIST		REVISIONS					
GP		00		P	LTR	DESCRIPTION	DATE	DWN	APVD
				A		RELEASED	17APR07	BM	WM

TERMINAL  
64 REQUIRED

YELLOW COLOR DOT  
LOCATED IN CENTER



1. THE CONTACT SURFACES OF THE TERMINALS ARE COATED WITH LUBRICANT.
  2. ALL DIMENSIONS SHOWN ARE FOR REFERENCE ONLY UNLESS OTHERWISE SPECIFIED.
  - 3 MATERIAL:  
HOUSING: THERMOPLASTIC, COLOR: BLACK  
TERMINALS: HIGH STRENGTH COPPER ALLOY PLATED WITH .000030 MIN GOLD OR GOLD FLASH OVER .000030 MIN PALLADIUM NICKEL ON CONTACT MATING SURFACE .000050 MIN NICKEL UNDERPLATE OVER ENTIRE TERMINAL.
  4. WIRE SIZE: 26, 27 & 28 AWG, 7 STRANDS OF COPPER CONDUCTORS. MAXIMUM INSULATION DIAMETER OF .045 IS ACCEPTABLE FOR MOST APPLICATIONS.
- 5 CORING MAY OR MAY NOT APPEAR AND IS AT THE DISCRETION OF TYCO.



1888845

1888845-1  
PART  
NUMBER

THIS DRAWING IS A CONTROLLED DOCUMENT.		DWN B. MCMASTER	22DEC06	 Tyco Electronics Corporation Harrisburg, PA 17105-3608
DIMENSIONS: INCHES		CHK W. MILLHIMES	22DEC06	
TOLERANCES UNLESS OTHERWISE SPECIFIED:		APVD W. MILLHIMES	22DEC06	
0 PLC ± - 1 PLC ± - 2 PLC ± - 3 PLC ± - 4 PLC ± - ANGLES ± - FINISH		NAME	ASSEMBLY, PLUG, 64 POSITION, E SLOT (CHAMP-LOK, BAIL LOCK)	
MATERIAL		PRODUCT SPEC	APPLICATION SPEC	RESTRICTED TO
		WEIGHT	-	SIZE
		CUSTOMER DRAWING	SCALE 2:1	CAGE CODE
		SCALE	2:1	DRAWING NO
		SHEET	1 of 1	REV
		REV	A	